



**ORANGE COUNTY**  
**LAND USE PLAN**  
*Guiding Our Future* **2050**

October 26, 2023

**Public Workshop:**  
**Confirming Community**  
**Aspirations**

# Workshop Schedule



Time	Activity
6:00 – 6:05 pm	Welcome and Introductions
6:05 – 6:15 pm	Overview Presentation and Engagement Instructions
6:15 – 6:35 pm	1 <sup>st</sup> Living Room Small Group Discussion
6:35 – 6:55 pm	2 <sup>nd</sup> Living Room Small Group Discussion
6:55 – 7:05 pm	Interactive Game
7:05 – 7:25 pm	3 <sup>rd</sup> Living Room Small Group Discussion
7:25 – 7:45 pm	4 <sup>th</sup> Living Room Small Group Discussion
7:45 – 8:00 pm	Wrap Up / Call to Action

# Orange County Land Use Plan 2050 Website



[Home](#)

[About](#)

[Get Involved](#)

[Resources](#)

[FAQs](#)



## Project Overview

In 2023, Orange County launched a major effort—called the Orange County Land Use Plan 2050—to establish a cohesive, countywide land use vision for the future and an actionable strategy to achieve that vision. This planning process will result in a rewrite of Orange County's key policy document—the Comprehensive Land Use Plan. [Click here](#) to view the currently adopted plan.

The Orange County Land Use Plan will serve to guide the County's growth and conservation effort through the year 2050. By setting goals and objectives, County officials can use the document to guide policy decisions that effectively provide a high quality of life for community members. The Land Use Plan will consider a variety of topics related to physical planning in the community, including:

- Community Equity



<https://www.orangecountylanduseplan.com/>

# Project Process



1

Phase 1:  
Launch  
Project

Month  
1

Meetings:

- Staff Meeting
- Staff Working Group Meeting #1, in-person
- Reconnaissance Tour
- Stakeholder Interviews

Major Deliverables:

- Project Management Plan
- Context Mapping
- Project Branding
- Summary of Stakeholder Interviews
- Project Website

**Summer  
2023**

2

Phase 2:  
Identify New  
Issues and  
Opportunities

Months  
2-7

Meetings:

- Staff Working Group Meetings #2-#5
- Community Engagement Window #1

Major Deliverables:

- Current Policy Profile
- Community Engagement Window #1 presentation and materials
- Summary of Engagement Window #1 Results
- Summary of New Issues and Opportunities

3

Phase 3:  
Evaluate  
Planning  
Influences

Months  
3-8

Meetings:

- Staff Working Group Meeting #6

Major Deliverables:

- Fact Book

4

Phase 4:  
Develop the  
Plan

Months  
9-20

Meetings:

- Staff Working Group Meetings #7-15
- Community Engagement Windows #2-#3

Major Deliverables:

- Staff, Staff Working Group, and Public Review Drafts of Comprehensive Plan
- Public engagement materials for Community Engagement Windows #2-#3
- Summary of Phase 4 Public Input Results

5

Phase 5:  
Adopt the  
Plan

Months  
21-26

Meetings:

- Staff Working Group Meeting #16
- Public Adoption Hearings (2)

Major Deliverables:

- Public Hearing Draft of Plan
- Final Adopted Comprehensive Land Use Plan and Transmittal of Final Source Files

**Fall 2025**

# What is a Comprehensive Land Use Plan?



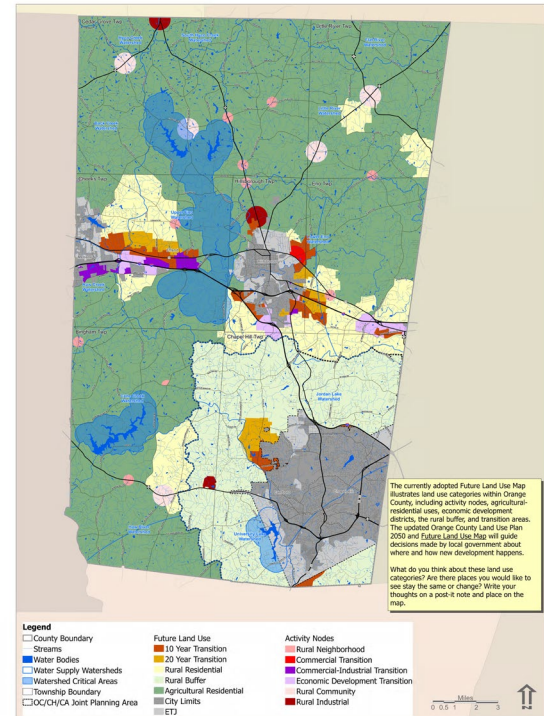
- 20-year **vision** for Orange County's future
- Built from inclusive **public engagement**
- Addresses community needs/wants
- Guides **growth** and coordinates **investment**
- Connects County's **operations** and investments through physical planning



# What is a Comprehensive Land Use Plan?



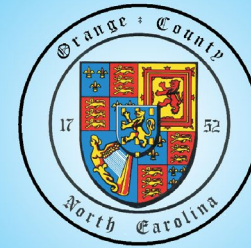
- Expresses a 20-year land use vision through goals, policies, and actions
- A tool that can be implemented through Unified Development Ordinance (UDO)
- Required by law to administer **County Zoning**
- Municipalities in Orange County have their own jurisdictions and supporting plans



# Currently Adopted Plan



Orange County, North Carolina  
**2030 Comprehensive Plan**



**ADOPTED**  
NOVEMBER 18, 2008

printed on recycled paper

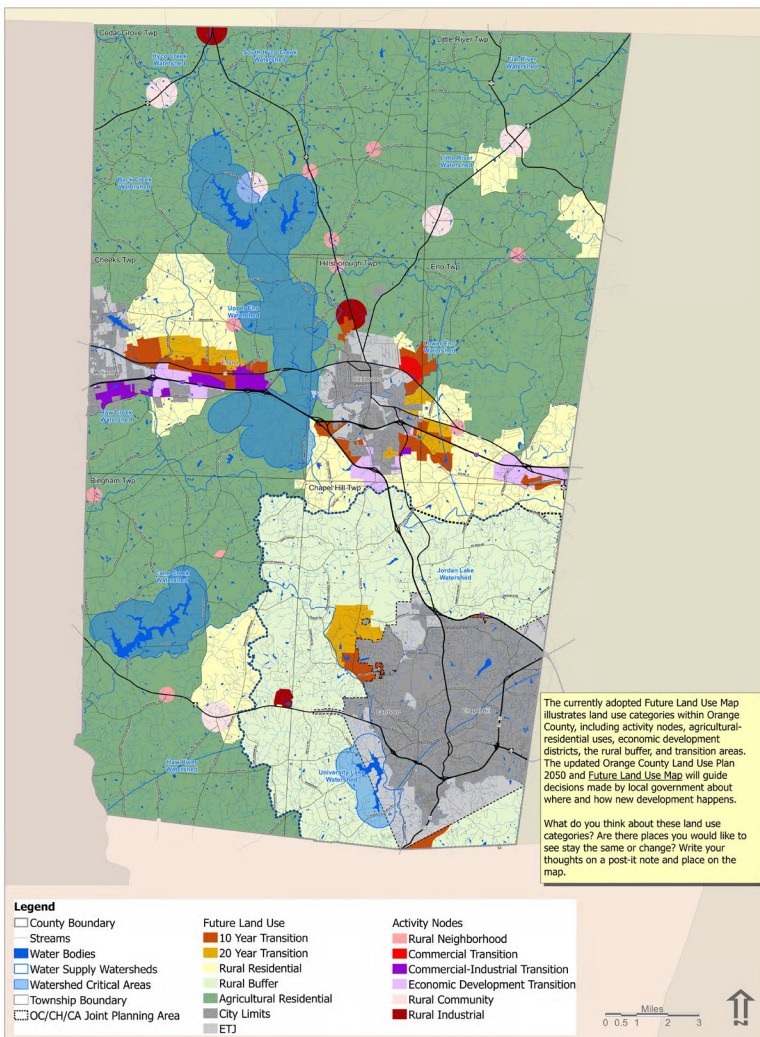
# Future Land Use



Currently adopted Future Land Use Map shows land use categories within Orange County:

- activity nodes
- agricultural-residential uses
- economic development districts
- the rural buffer
- transition areas

The updated Orange County Land Use Plan 2050 and Future Land Use Map will **guide decisions made by the County about where and how new development happens.**

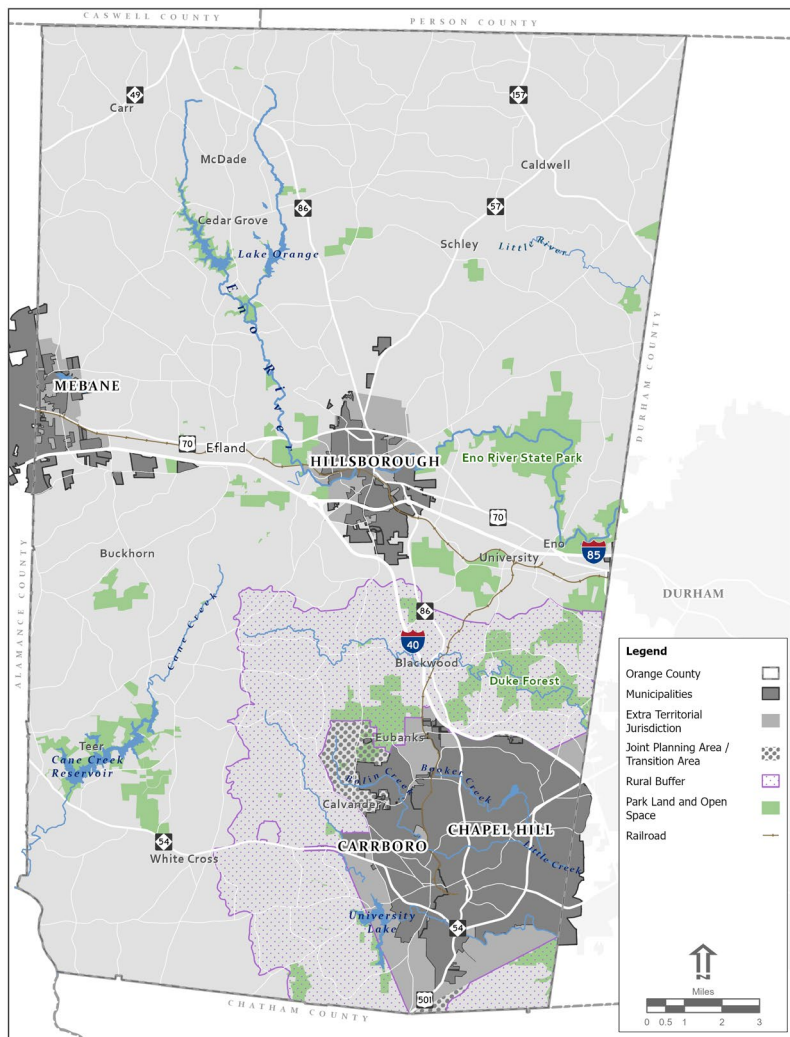




# Planning Area



- Municipal Planning & Zoning Jurisdictions (Town + ETJ)
- Extraterritorial Jurisdiction (ETJ)
- County Planning & Zoning Jurisdiction
- Joint Planning Area / Transition Area
- Rural Buffer



# Growth Rate Over the Last Decade



	Total Population (2010)	Total Population (2020)	Percent Growth (2010 to 2020)
North Carolina	9,535,483	10,439,388	9%
<b>Orange County</b>	<b>133,801</b>	<b>148,696</b>	<b>11%</b>
Alamance County	151,131	171,415	13%
Chatham County	63,505	76,285	20%
Durham County	267,587	324,833	21%
Wake County	900,993	1,129,410	25%

Source: US Census Bureau, the Orange County 16th Annual State of the Community Report (September 2023)

# Population by Jurisdiction



	Population (2022)	Percentage of Total Orange County Population
Chapel Hill*	59,270	39.9%
<b>Unincorporated Orange County</b>	<b>54,579</b>	<b>36.7%</b>
Carrboro	21,136	14.2%
Hillsborough	9,902	6.7%
Mebane*	3,675	2.5%
Durham*	145	0.1%
Total	148,707	100.0%

*\*Unincorporated Orange County means the areas in Orange County but outside of municipalities, including Carrboro, Chapel Hill, Durham, Hillsborough, and Mebane.*

*\*\*Portion within Orange County geographic limits*

*Source: OSBM State Demographer, 2022 Certified Population Estimates*



**The true value of  
planning lies  
ultimately in the  
implementation of  
collectively  
supported ideas.**

# Community Engagement Window #1



- Community Workshop
- Online engagement available now
- Community Meetings to be scheduled for January 2024



Orange County Land Use Plan 2050  
Guiding Our Future

Online Activities

## Confirming Community Aspirations

In 2023, Orange County launched a major effort—called the Orange County Land Use Plan 2050—to establish a cohesive, countywide land use vision for the future and an actionable strategy to achieve that vision. This planning process will result in a rewrite of Orange County's key policy document—the Land Use Plan. [Click here](#) to view the currently adopted plan.

The Orange County Land Use Plan will serve to guide the County's growth and conservation efforts through the year 2050. By setting goals and objectives, County officials can use the document to guide policy decisions that effectively provide a high quality of life for community members. The Land Use Plan will consider a variety of topics related to physical planning in the community.

The first round of public engagement launched on October 26, 2023. You can participate online by 1) exploring data and trends and 2) sharing your feedback in the five sections below. At the end, please share a little about yourself so that we can improve our outreach to the community.



About the Plan and Future Land Use Map

Learn about the Orange County Land Use Plan 2050 process and timeline. Share your thoughts on the currently adopted Future Land

# Workshop “Living Rooms”



## OUR DEN

Our Diverse People and Communities



## OUR NEIGHBORHOOD

Our Regional and Local Growth Trends



## OUR YARD

Our Natural Assets

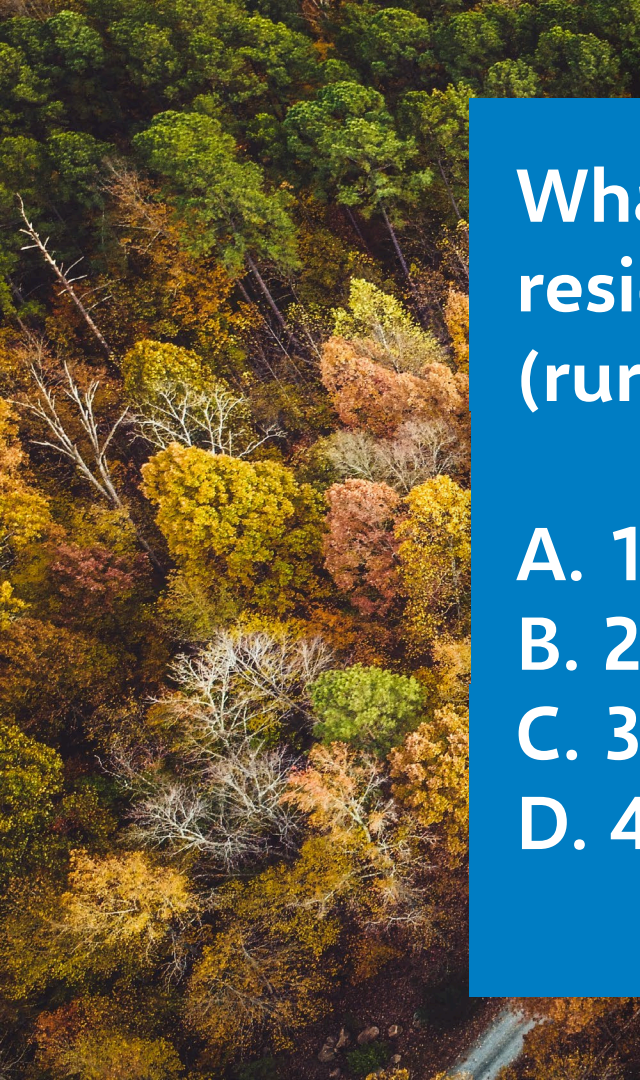


## OUR KITCHEN

Our Economy, Jobs, and Commuting

Let's have some Orange  
County fun with trivia!





**What percentage of Orange County residents live in unincorporated (rural) Orange County versus towns?**

- A. 16%**
- B. 23%**
- C. 37%**
- D. 42%**

**Answer: C. 37%**





# What is unique about Orange County's watersheds?

**ANSWER: Orange County is split between two major watersheds - the Neuse and the Cape Fear River Basins. For both, the streams and rivers within the county are headwaters to those watersheds, which supply drinking water to the region.**



What is the average travel time to get to work for Orange County residents?

- A. 19 minutes
- B. 24 minutes
- C. 31 minutes
- D. 42 minutes

**ANSWER: B. 24 minutes**



**Name an endangered species that can be found in Orange County.**

- Amphibians: Neuse River waterdog
- Birds: red-cockaded woodpecker
- Clams: Dwarf wedgemussel, green floater, Atlantic pigtoe
- Fish: Cape Fear shiner, Carolina madtom

**ANSWER: All of the above**

# Exit Questionnaire



Please fill this out!

It will help the project team prepare for the Community Meetings in January.

## EXIT QUESTIONNAIRE



Please share a little about yourself so we know who has participated in the Orange County Land Use Plan 2050 process.

### TELL US ABOUT THE EVENT

How did you hear about this meeting? \_\_\_\_\_

Were you comfortable sharing your input today?

Yes  No  Other: \_\_\_\_\_

Will you participate in future events?

Yes  No  Maybe

### TELL US ABOUT YOURSELF

If you are willing to share some information about yourself, it will help us ensure we are reaching a broad set of voices.

Which racial or ethnicity group do you most closely identify with?

Asian  Black / African-American  American Indian / Alaska Native  
 White / Caucasian  Two or more races  
 Other: \_\_\_\_\_

Are you Hispanic / Latinx?  Yes  No

What is your age?

<15 years  25-34 years  45-54 years  65 or over  
 15-24 years  35-44 years  55-64 years

Where do you live?

Carrboro  Chapel Hill  Hillsborough  Mebane  
 Unincorporated Orange County (Rural)  
 I do not live in Orange County  
 Other: \_\_\_\_\_

Tell us about your connection to Orange County. [Please check all that apply.]

I rent a home  I own a home  
 I own a local business  I work at a local business  
 Regional interest/stakeholder  
 Other: \_\_\_\_\_

Is there anything else you'd like to share with us?

---

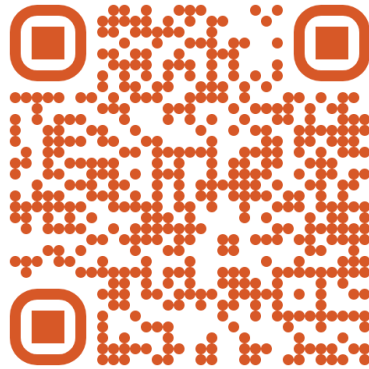
---

---

# How can you stay involved?



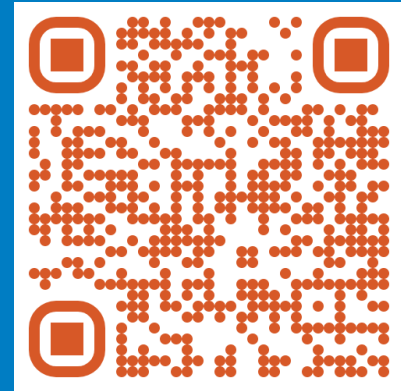
- Sign up for updates on the website!
- Please share the online engagement with 5 friends, family, neighbors, and coworkers!



<https://www.orangecountylanduseplan.com/>



**Thank you!**



**<https://www.orangecountylanduseplan.com/>**