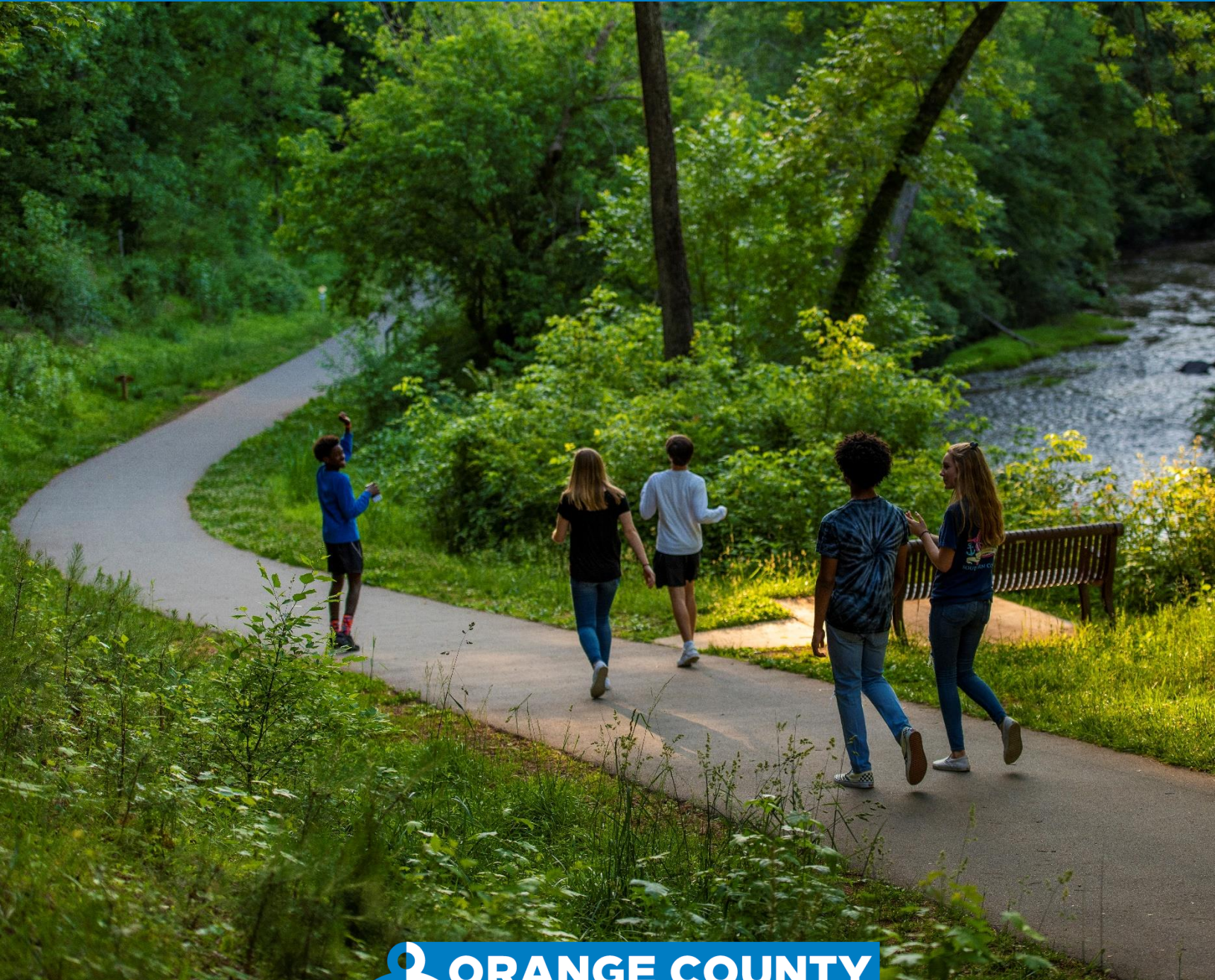


ORANGE COUNTY LAND USE PLAN 2050

COMMUNITY POLICY PROFILE



Prepared by: Clarion Associates

Published November 2023

TABLE OF CONTENTS

- Introduction..... 3**
- Special Topic Plans 6**
 - Orange County Climate Action Plan 6
 - One Orange Countywide Racial Equity Framework..... 7
- Environment, Conservation, and Hazard Mitigation 8**
 - Eno-Haw Regional Hazard Mitigation Plan 8
 - A Landscape Plan for Wildlife Habitat Connectivity in the Eno River and New Hope Creek Watersheds, North Carolina..... 9
 - State of the Environment 10
 - Strategic Growth and Resource Conservation Program Report 10
- Land Use, Development, and Infrastructure..... 12**
 - Master Telecommunications Plan Map..... 12
 - Buckhorn Area Study 13
 - Eno Economic Development District Water and Sewer System Project Master Plan Report..... 13
 - Orange County 2030 Comprehensive Plan..... 14
 - Eno Economic Development District Area Small Area Plan..... 15
 - NC Highway 57 Speedway Area Small Area Plan 16
 - Efland-Mebane Small Area Plan..... 17
 - Investigation of Ground-Water Availability and Quality in Orange County, North Carolina 17
 - Stoney Creek Basin Small Area Plan..... 18
- Interlocal Agreements and Plans 19**
 - Greene Tract Interlocal Agreement 19
 - Central Orange Coordinated Area Land Use Plan..... 20
 - Mebane-Orange County Utility Service Agreement..... 20
 - Hillsborough-Orange County Strategic Growth Plan..... 21
 - Water and Sewer Management, Planning and Boundary Agreement..... 22
 - Joint Planning Agreement..... 22
 - Joint Planning Land Use Plan 23
- Transportation..... 24**
 - Orange County Transit Plan Update 24
 - Efland-Buckhorn-Mebane Access Management Plan..... 25
 - Orange Grove Road Access Management Awareness Project & Report 26
- Parks and Recreation..... 27**
 - Blackwood Farm Park Master Plan..... 27
 - Little River Regional Park & Natural Area Master Plan..... 28
 - 2030 Parks and Recreation Master Plan, Orange County 28
 - Orange County Mountains-to-Sea Trail (MST) Route..... 29
 - New Hope Corridor Open Space Master Plan..... 29

INTRODUCTION

The Community Policy Profile is a product of the Orange County Land Use Plan 2050 planning process. For more information about the planning effort, go to <https://www.orangecountylanduseplan.com/>

This report summarizes land use policy guidance from Orange County plans and other policy documents. These documents provide the foundation of adopted policies which the Land Use Plan 2050 will build upon. This guidance is organized into seven categories:

1. Special Topic Plans
2. Environment, Conservation, and Hazard Mitigation
3. Land Use and Development (Unincorporated Orange County)
4. Interlocal Agreements and Plans
5. Transportation
6. Climate Action and Infrastructure
7. Parks and Recreation

The report contains brief descriptions and summaries of each of these documents and highlights the key policy topics addressed in the reports. The documents used in preparing this report are listed below.

Documents Included in the Community Policy Profile

Special Topic Plans

Document	Date	Geographic Area
Orange County Climate Action Plan	2023	Orange County
One Orange Countywide Racial Equity Framework	2022	Orange County

Environment, Conservation, and Hazard Mitigation

Document	Date	Geographic Area
Eno-Haw Regional Hazard Mitigation Plan	2020	Orange County and surrounding counties
A Landscape Plan for Wildlife Habitat Connectivity in the Eno River and New Hope Creek Watersheds, North Carolina	2019	Portions of Orange, Durham, Chatham, and Wake Counties

State of the Environment	2019	Orange County
Strategic Growth and Resource Conservation Program Report	2009	Orange County

Land Use, Development, and Infrastructure

Document	Date	Geographic Area
Master Telecommunications Plan Map	2020	Orange County
Buckhorn Area Study	2020	Buckhorn Economic Development District
Eno Economic Development District Water and Sewer System Project Master Plan Report	2013	Eno Economic Development District
Orange County 2030 Comprehensive Plan	2008	Orange County
Eno Economic Development District Small Area Plan	2008	Eno Economic Development District
NC Highway 57 Speedway Area Small Area Plan	2007	Orange County near the Orange County Speedway
Efland-Mebane Small Area Plan	2006	Orange County near the Mebane ETJ
Investigation of Ground-Water Availability and Quality in Orange County	2001	Orange County
Stoney Creek Basin Small Area Plan	1996	The triangle created by I-85, NC-86, and the railroad

Interlocal Agreements and Plans

Document	Date	Geographic Area
Greene Tract Interlocal Agreement	2021	Greene Tract
Central Orange Coordinated Area Land Use Plan	2013	Area within Hillsborough's Urban Service Boundary
Mebane-Orange County Utility Service Agreement	2012	East Mebane and nearby unincorporated Orange County

Hillsborough-Orange County Strategic Growth Plan	2006	Hillsborough and nearby unincorporated Orange County
Water and Sewer Management, Planning and Boundary Agreement	2001	Orange County, Carrboro, Chapel Hill, Hillsborough
Joint Planning Agreement	1987	Joint Planning Area (just outside the ETJ of Chapel Hill and Carrboro)
Joint Planning Land Use Plan	1986	Joint Planning Area

Transportation

Document	Date	Geographic Area
Orange County Transit Plan Update	2022	Orange County
Efland-Buckhorn-Mebane Access Management Plan	2019	Area along I-85/I-40 between Efland and Mebane
Orange Grove Road Access Management Plan	2003	Orange Grove Road corridor

Parks and Recreation

Document	Date	Geographic Area
Blackwood Farm Park Master Plan	2023	Blackwood Farm Park
Little River Regional Park & Natural Area Master Plan (Appendices)	2021	Little River Regional Park and Natural Area
2030 Parks and Recreation Master Plan	2018	Orange County
Orange County Mountains-to-Sea Trail (MST) Route (Progress Reports)	2018	Orange County
New Hope Corridor Open Space Master Plan	1991	The City of Durham, Durham County, Orange County, and The Town of Chapel Hill

SPECIAL TOPIC PLANS

Document	Date	Geographic Area
Orange County Climate Action Plan	2023	Orange County
One Orange Countywide Racial Equity Framework	2022	Orange County

Orange County Climate Action Plan

Date Published: November 2023

Geographic Area: Orange County

Prepared By: Orange County

Purpose: Guide greenhouse gas reductions in County operations and community-wide.

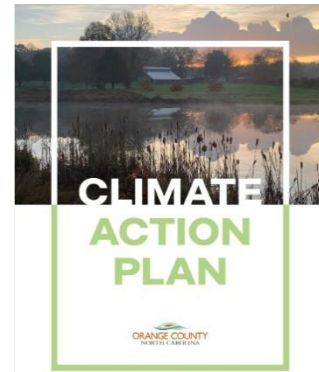
Key Objectives:

Unify existing climate work under one strategic framework to equitably transition Orange County to a low-carbon, climate-resilient community.

Top 10 Things the County Should Do:

1. Expand County funding to include climate expenditures and additional full time sustainability and grant administrator staff
2. Integrate sustainability as a framework within the overall County’s planning process
3. Identify and prioritize actions targeted to vulnerable populations within the County
4. Be prepared for climate emergencies
5. Decrease vehicle miles traveled (VMT) 30% from a 2019 baseline by 2050
6. Increase community EV adoption to 50% by 2035 and 100% by 2050
7. Achieve 50% emission reduction target of all Scope 1 and 2 emissions by 2030 and 100% by 2050 using a 2005 baseline
8. Achieve 100% renewable electricity by 2050 in municipal operation and community-wide
9. Increase community-wide solar capacity by 25% by 2035 to 33.66 MW
10. Complete an electrification study and establish a long-term implementation plan (Phase 1 and Phase 2) by 2025

This plan emerged as a result of an extensive review of both environmental state mandates, the commitments of local and regional jurisdictions, and existing public private partnership structures.



Planning Topics:

- Future land use and community character
- Natural hazards resilience
- Regional collaboration
- Preserving natural resources
- Multimodal transportation

One Orange Countywide Racial Equity Framework

Date Published: 2022

Geographic Area: Orange County

Prepared By: Orange County, Carrboro, Chapel Hill, Hillsborough

Purpose: Uncover and address implicit biases in Orange County to ensure that race no longer can be used to predict life outcomes in the Orange County community.

Key Objectives:

The plan has five pillars, which jurisdictions use as a foundation for local action. The five pillars are: training and organizational capacity, community engagement, racial equity index, racial equity assessment lens, and evaluation and accountability. The Orange County Land Use Plan 2050 engagement process can embody the community engagement pillar by engaging residents and employees of color as subject matter experts.

As part of the One Orange effort, Orange County collaborated with Carrboro, Chapel Hill, and Hillsborough on the [Racial Equity Index](#). The Racial Equity Index, in the form of a dashboard, can be used to provide awareness, track disparity, or inform strategies, grants, and services. The dashboard includes statistics on public health, education, economic opportunity, living conditions, infrastructure, and voting.

Planning Topics:

- Diversity, equity, and inclusion
- Regional collaboration
- Planning in multijurisdictional areas of common interest
- Employment opportunities



ENVIRONMENT, CONSERVATION, AND HAZARD MITIGATION

Document	Date	Geographic Area
Eno-Haw Regional Hazard Mitigation Plan	2020	Orange County and surrounding counties
A Landscape Plan for Wildlife Habitat Connectivity in the Eno River and New Hope Creek Watersheds, North Carolina	2019	Portions of Orange, Durham, Chatham, and Wake Counties
State of the Environment	2019	Orange County
Strategic Growth and Resource Conservation Program Report	2009	Orange County

Eno-Haw Regional Hazard Mitigation Plan

Date Published: September 2020

Geographic Area: Orange County, Alamance County, Durham County, Person County (including the municipalities and unincorporated areas)

Prepared By: Orange County, Alamance County, Durham County, Person County

Purpose: Ensure all jurisdictions in the Eno-Haw region remain eligible for federal disaster assistance from the Federal Emergency Management Agency, including the Hazard Mitigation Grant Program, Pre-Disaster Mitigation Grant Program, and the Flood Mitigation Assistance Grant Program.

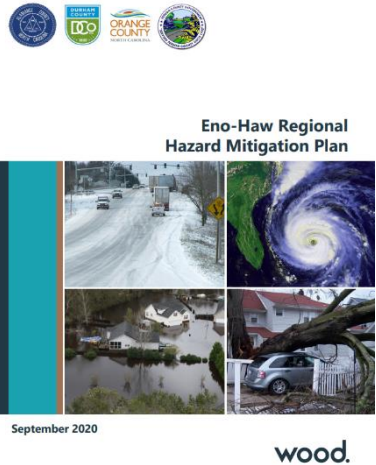
Key Objectives:

Perform a risk assessment and capability assessment to evaluate the potential impacts of hazards within the region and assess the participating communities’ existing capability to reduce disaster losses.

Identify policies, actions, and activities to reduce the impact that future natural hazard occurrences will have on people and property in the planning area. This includes long-range mitigation goals and short-term mitigation actions.

Planning Topics:

- Natural hazards resilience



- Regional collaboration
- Planning in multijurisdictional areas of common interest

A Landscape Plan for Wildlife Habitat Connectivity in the Eno River and New Hope Creek Watersheds, North Carolina

Date Published: December 2019

Geographic Area: Eno River and New Hope Creek-Jordan Lake watersheds (including portions of Chatham, Durham, Orange, and Wake Counties; the City of Durham; and the towns of Apex, Carrboro, Cary, Chapel Hill, and Hillsborough)

Prepared By: Eno-New Hope Landscape Conservation Group; this was a Partners for Green Growth project funded by the North Carolina Wildlife Resources Commission and Orange County, and administered by the North Carolina Botanical Garden Foundation

Purpose: Provide an actionable plan for ensuring wildlife habitat connectivity across the landscape of the Eno River and New Hope Creek-Jordan Lake watersheds in North Carolina

Key Objectives:

Identify and map priority wildlife habitat and corridors

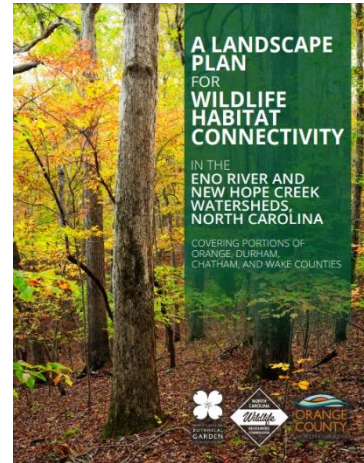
Review existing land protection, wildlife habitat, and corridor conservation priorities, policies, and ordinances

Develop recommendations to inform land protection, land use, and transportation decision-making

Important Notes:

Recommendations include committing to landscape conservation and wildlife habitat corridor protection; using Green Growth Toolbox guidelines; prioritizing and incorporating landscape corridor protection into local land conservation programs and initiatives; incorporating landscape corridor protection into planning documents to increase the likelihood of implementation and funding; and coordinating with other jurisdictions, government agencies, conservation partners, and funding entities in pursuing landscape conservation and corridor protection goals.

Planning Topics: Growth management, annexation, and ETJ; Regional collaboration; Planning in multijurisdictional areas of common interest; Preserving natural resources



State of the Environment

Date Published: 2019

Geographic Area: Orange County

Prepared By: Orange County Commission for the Environment

Purpose: Research key issues affecting land, water, and air/energy resources and recommend related actions for the Orange County government and decision makers, including newthe Board of County Commissioners (BOCC), as well as Orange County residents.

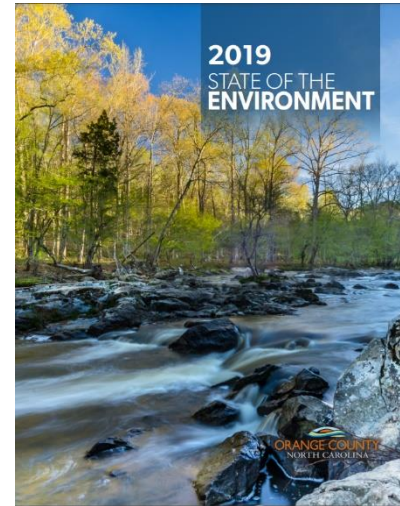
Reflect on and recognize the County's environmental achievements, review environmental indicators, discover knowledge gaps, and think creatively on policies and actions for the future.

Important Notes:

Recommendations include developing a tree policy across all County-owned property, expediting efforts to reduce the county's carbon footprint, setting new goals for land protection, and considering a conservation land acquisition bond to expand the Lands Legacy program.

Planning Topics:

- Preserving natural resources
- Growth management
- Future land use and community character



Strategic Growth and Resource Conservation Program Report

(Orange County Transfer of Development Rights Feasibility Study, Phase III Report)

Date Published: 2009

Geographic Area: Orange County

Prepared By: Orange County

Purpose: Formulate a complete implementation plan for a Strategic Growth and Resource Conservation Program, and address how program performance should be measured and tracked.

Key Objectives:



PREPARED BY:
THE LOUIS BERKIN GROUP, INC.
UNC Charlotte Urban Institute 6.22.2009

Establish the legal, administrative, design, and economic considerations of a strategic growth and resource conservation program in Orange County. A traditional transfer of development rights (TDR) program was determined to require additional authority from the state of North Carolina, so this program was developed to achieve similar objectives while relying on existing County authority.

Program recommendations include: designated growth areas, designated conservation areas, conservation points, development intensity bonus, and design requirements.

Address and provide recommendations on several issues critical to the feasibility of a Strategic Growth and Resource Conservation Program in Orange County.

The goals of this program are rural preservation, strategic urbanization, and monitor program performance.

Planning Topics:

- Growth management Future land use and community character
- Preserving natural resources

LAND USE, DEVELOPMENT, AND INFRASTRUCTURE

Document	Date	Geographic Area
Master Telecommunications Plan Map	2020	Orange County
Buckhorn Area Study	2020	Buckhorn Economic Development District
Eno Economic Development District Water and Sewer System Project Master Plan Report	2013	Eno Economic Development District
Orange County 2030 Comprehensive Plan	2008	Orange County
Eno Economic Development District Small Area Plan	2008	Eno Economic Development District
NC Highway 57 Speedway Area Small Area Plan	2007	Orange County near the Orange County Speedway
Efland-Mebane Small Area Plan	2006	Orange County near the Mebane ETJ
Investigation of Ground-Water Availability and Quality in Orange County	2001	Orange County
Stoney Creek Basin Small Area Plan	1996	The triangle created by I-85, NC-86, and the railroad

Master Telecommunications Plan Map

Date Published: October 2020

Geographic Area: Orange County

Prepared By: Orange County Planning and Inspections

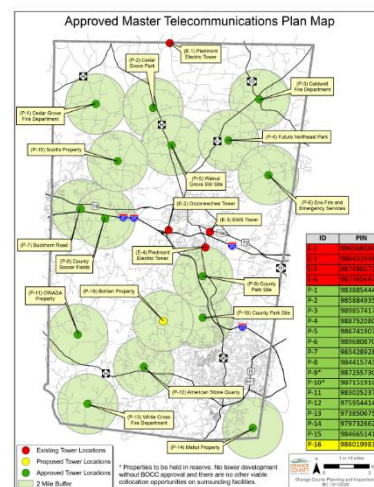
Purpose: Show existing, proposed, and approved telecommunications tower locations.

Key Objectives:

Identify fifteen tower locations for telecommunications.

Planning Topics:

- Future land use and community character
- Community infrastructure



Buckhorn Area Study

Date Published: December 2020 (Draft)

Geographic Area: The Buckhorn Economic Development District and surrounding area, near I-40 and Buckhorn Road

Prepared By: City of Mebane and Orange County

Purpose: Identify properties that could be zoned for nonresidential purposes and support economic development.

Key Objectives:

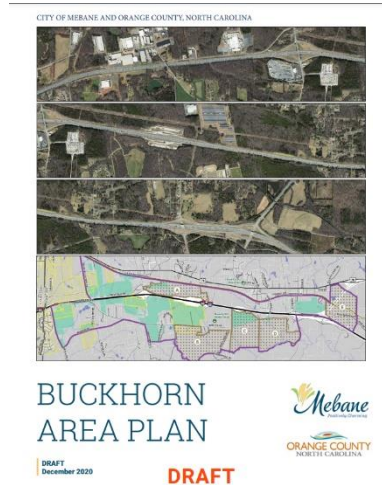
Perform a technical study of future land use and potential utility services.

Determine parcels most suitable for development within the study area.

Provide necessary information for Mebane to amend its comprehensive plan to include the Medline site and other areas previously not within its Future Growth Area boundary line.

Planning Topics:

- Growth management, annexation, and ETJ
- Future land use and community character
- Planning in multijurisdictional areas of common interest
- Employment opportunities
- Community infrastructure



Eno Economic Development District Water and Sewer System Project Master Plan Report

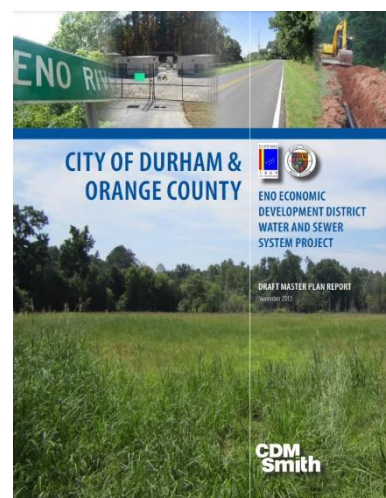
Date Published: 2013

Geographic Area: Eno Economic Development District (Orange County near the Durham County line, along US-85 and near the Eno Rock Quarry)

Prepared By: City of Durham and Orange County

Purpose: Construct the backbone of a water and sewer system within the Eno Economic Development District that will promote an effective growth pattern in the County with respect to location and phasing.

Key Objectives:



Develop water demand and sewer flow projections.

Determine the appropriate size and location for sewer infrastructure.

Develop conceptual opinions of probable cost for the recommended improvements.

Planning Topics:

- Growth management
- Planning in multijurisdictional areas of common interest
- Employment opportunities

Orange County 2030 Comprehensive Plan

Date Published: 2008

Geographic Area: Orange County

Prepared By: Orange County

Purpose: Guide the County's future policy decisions related to growth and development through 2030.

Key Objectives:

Address a wide range of interrelated planning areas, including economic development, housing, land use, natural and cultural systems, parks and recreation, services and community facilities, and transportation.

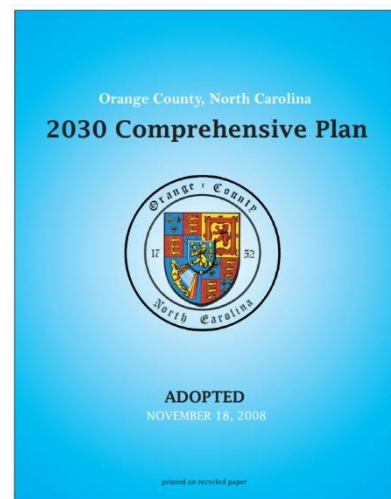
Promote sustainability within Orange County – develop a community that meets the needs of the present generation without compromising the ability of future generations to meet their needs.

Important Notes:

Economic Development Overarching Goal: Viable and sustainable economic development that contributes to both property and sales tax revenues and enhances high-quality employment opportunities for County residents.

Housing Overarching Goal: Opportunity for all citizens of Orange County to rent or purchase safe, decent, accessible, and affordable housing.

Land Use Overarching Goal: Coordination of the amount, location, pattern and designation of future land uses, with availability of County services and facilities sufficient to meet the needs of Orange County's population and economy consistent with other Comprehensive Plan element goals and objectives.



Natural and Cultural Systems Overarching Goal: A sustainable balance and appreciation of natural, cultural and agricultural resources.

Parks and Recreation Overarching Goal: Regionally coordinated park facilities that provide healthy opportunities for recreation and exercise for all citizens of Orange County, and that preserve important cultural and natural resources.

Services and Community Facilities Overarching Goal: Growth consistent with the provision of adequate and sustainable County services and facilities while managing the impacts upon the environmental infrastructure and effectively protecting the County's natural and cultural resources.

Transportation Overarching Goal: An efficient and balanced transportation system that uses multiple motorized and nonmotorized modes of transportation.

Planning Topics:

- Future land use and community character
- Housing affordability, diversity, and accessibility
- Preserving natural resources
- Recreation opportunities
- Multimodal transportation
- Employment opportunities

Eno Economic Development District Area Small Area Plan

Date Published: 2008

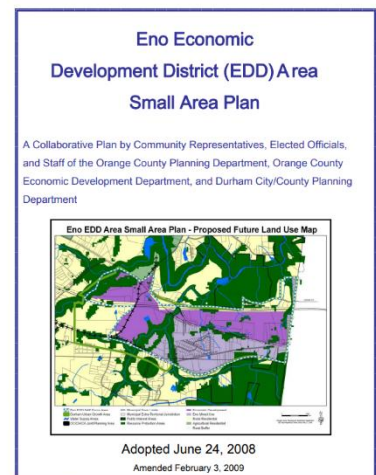
Geographic Area: Orange County near the Durham County line, along US-85 and near the Eno Rock Quarry

Prepared By: Orange County and Durham County

Purpose: Evaluate the existing Land Use Element of the County's Comprehensive Plan, as it pertains to the Eno EDD area, and offer local perspective on whether the existing Land Use Element Map and roadways are adequate to address changes that are occurring in the area.

Key Objectives:

Address land use, infrastructure, and local government jurisdictional issues.



Make recommendations relating to water and sewer, land use and zoning, transportation, housing, and intergovernmental/community issues.

Goal: "In the future, the Focus Area should be well served by reliable infrastructure to accommodate orderly, planned growth. An efficient multi-modal transportation system will operate in the area and commercial and light industrial uses will provide job opportunities to area and County residents."

Planning Topics:

- Future land use and community character
- Planning in multijurisdictional areas of common interest
- Multimodal transportation
- Employment opportunities

NC Highway 57 Speedway Area Small Area Plan

Date Published: 2007

Geographic Area: The Northeastern corner of Orange County near the Person and Durham County lines, along NC 57, near the Orange County Speedway

Prepared By: Orange County and Durham County

Purpose: Make recommendations for future land use in the area.

Key Objectives:

Analyze existing conditions and make recommendations regarding acceptable development trends and land uses within the area, the need for additional community services, and transportation issues and concerns.

Maintain the rural character and high environmental quality of the area.

The four planning principles of this report are: preservation and protection of rural character and nature, minimization of negative impacts to natural systems/environmentally sensitive areas, restrict growth and development so that it complements the rural character and lifestyles, and maintenance of present service levels for existing infrastructure.

Planning Topics:

- Future land use and community character
- Planning in multijurisdictional areas of common interest
- Preserving natural resources
- Community infrastructure

Efland-Mebane Small Area Plan

Date Published: June 2006

Geographic Area: Orange County near the Mebane ETJ; roughly north of West Ten Rd, south of Lebanon Rd, west of Buckhorn Rd, and east of the I-85/US-70 connector

Prepared By: Orange County Planning Department and Efland/Mebane Small Area Plan Task Force

Purpose: Evaluate the existing Land Use Element of the County's Comprehensive Plan as it pertains to the Efland/Mebane area.

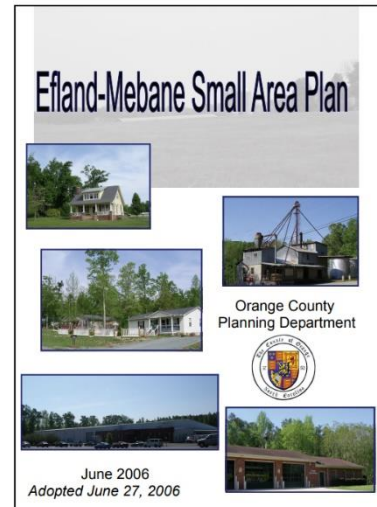
Key Objectives:

Envision future land use and make recommendations relating to water and sewer, land use, transportation, housing, economic development, and intergovernmental/community issues for the planning area.

The vision for this area includes a core village area, an efficient multi-modal transportation system, commercial and light industrial uses, a mix of housing types and sizes economically accessible to a broad spectrum of working people, and a system of parks and greenspace connected by greenways.

Planning Topics:

- Growth management
- Future land use and community character
- Planning in multijurisdictional areas of common interest
- Housing affordability, diversity, and accessibility
- Recreation opportunities
- Multimodal transportation
- Employment opportunities



Investigation of Ground-Water Availability and Quality in Orange County, North Carolina

Date Published: 2001

Geographic Area: Orange County

Prepared By: U.S. Geological Survey

Purpose: Provide County managers and planners with critical information on the availability and quality of groundwater.

Key Objectives:

Quantify groundwater availability, determine the quality of the groundwater, and estimate the susceptibility of groundwater to contamination from the surface and shallow subsurface.

Present the results of this investigation and describe the methods used.

Planning Topics:

- Growth management
- Community infrastructure

Stoney Creek Basin Small Area Plan

Date Published: 1996

Geographic Area: The triangle created by I-85, NC-86, and the railroad (southeast of New Hope Church Road)

Prepared By: Orange County

Purpose: Prepare a land use plan, including implementation recommendations, for the planning area.

Key Objectives:

Identify levels of land-use intensity to help protect key resource areas.

Recommend implementation strategies like Flexible Development Options (density bonuses to preserve the Stoney Creek Basin Area).

Goals: preserve landowners' right to receive a fair return on investment for their property, and protect the area's "rural character."

Planning Topics:

- Future land use and community character
- Preserving natural resources

INTERLOCAL AGREEMENTS AND PLANS

Document	Date	Geographic Area
Greene Tract Interlocal Agreement	2021	Greene Tract
Central Orange Coordinated Area Land Use Plan	2013	Area within Hillsborough’s Urban Service Boundary
Mebane-Orange County Utility Service Agreement	2012	East Mebane and nearby unincorporated Orange County
Hillsborough-Orange County Strategic Growth Plan	2006	Hillsborough and nearby unincorporated Orange County
Water and Sewer Management, Planning and Boundary Agreement	2001	Orange County, Carrboro, Chapel Hill, Hillsborough
Joint Planning Agreement	1987	Joint Planning Area (just outside the ETJ of Chapel Hill and Carrboro)
Joint Planning Land Use Plan	1986	Joint Planning Area

Greene Tract Interlocal Agreement

Date Published: June 2021

Geographic Area: Greene Tract (104 acres jointly owned by Orange County, Chapel Hill, and Carrboro, 60 acres owned by Orange County); in Chapel Hill’s extraterritorial jurisdiction (ETJ)

Prepared By: Orange County, Town of Chapel Hill, Town of Carrboro

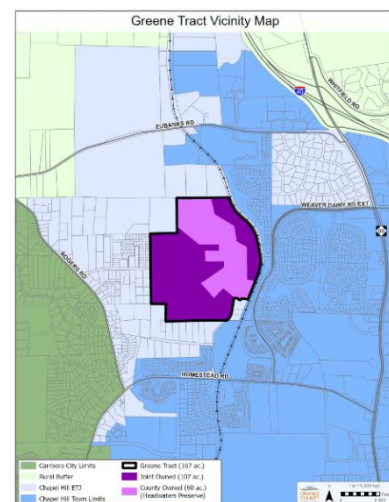
Purpose: Agree upon future land uses and next steps for the Greene tract.

Key Objectives:

Provide for the future land uses of the Greene Tract, including affordable and mixed-income housing, a school site, recreation, and environmental preservation. (Commercial uses were notably not included in this agreement.)

Express intent to initiate a development agreement and set forth parameters for development regulations.

Important Note:



For more information, see the [Greene Tract project page](#) on the Planning & Inspections department website or the [Greene Tract StoryMap](#).

Planning Topics:

- Growth management, annexation, and ETJ
- Future land use and community character
- Planning in multijurisdictional areas of common interest
- Preserving natural resources
- Recreation opportunities

Central Orange Coordinated Area Land Use Plan

Date Published: 2013, amended 2016

Geographic Area: Area within Hillsborough’s Urban Service Boundary

Prepared By: Hillsborough and Orange County

Purpose: Create a tool to determine the consistency of any proposed rezoning request with the Town’s and County’s future land use visions.

Key Objectives:

Develop land use policy direction through future land use classifications for the area within Hillsborough’s Urban Service Boundary.

Produce a map showing these future land use classifications.

Planning Topics:

- Growth management, annexation, and ETJ
- Future land use and community character
- Planning in multijurisdictional areas of common interest

Mebane-Orange County Utility Service Agreement

Date Published: July 2012

Geographic Area: East Mebane and nearby unincorporated Orange County

Prepared By: Orange County and Mebane

Purpose: Expand the area to which Mebane will provide water and sewer services.

Key Objectives:

Provide assurance that Orange County would construct the water and sewer lines and would then transfer ownership to Mebane, which would provide the water and sewer service.

Delineate the area to be serviced by this agreement.

Planning Topics:

- Growth management, annexation, and ETJ
- Planning in multijurisdictional areas of common interest
- Community infrastructure

Hillsborough-Orange County Strategic Growth Plan

Date Published: December 2006

Geographic Area: Hillsborough and Orange County in the immediate environs of the Town

Prepared By: Hillsborough and Orange County

Purpose: Create a recommended land use pattern and a recommended structure for an Interlocal Agreement.

Key Objectives:

Identify the desired type, rate, timing, and location for future growth occurring over the next 20 years within and around the Town of Hillsborough.

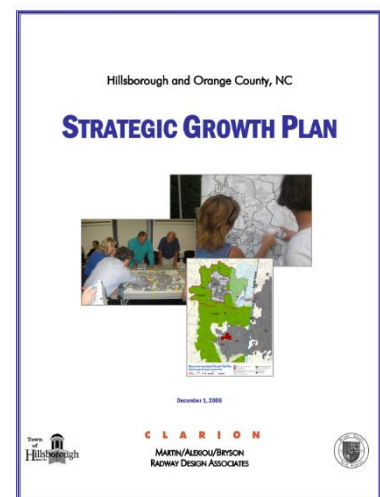
Create the framework to define and implement an Urban Services Area within which public water and sewer services will be expected to be available, and outside of which the expectation would be for low-density residential and/or agricultural uses.

Important Notes:

Goals are: 1) Preserve and enhance the Hillsborough core area, 2) Preserve significant cultural and natural resources, 3) Coordinate growth with water/sewer availability, 4) Grow in a fiscally responsible way, 5) Keep existing businesses healthy, and 6) Assure continuity in public service provision.

Planning Topics:

- Growth management, annexation, and ETJ
- Future land use and community character
- Planning in multijurisdictional areas of common interest
- Preserving natural resources



- Community infrastructure

Water and Sewer Management, Planning and Boundary Agreement

Date Published: 2001

Geographic Area: Orange County, Carrboro, Chapel Hill, Hillsborough

Prepared By: Orange County, Carrboro, Chapel Hill, Hillsborough, Orange Water and Sewer Authority

Purpose: Provide a comprehensive, County-wide system of service areas for future utility development and identify solutions to challenges of private water and wastewater systems in areas without public water and sewer service.

Key Objectives:

Facilitate predictable long-range water and sewer capital improvement planning and financing and provide for limitations on water and sewer service.

Lay out procedures for the provision of service and limitations on service.

Planning Topics:

- Growth management
- Planning in multijurisdictional areas of common interest
- Regional collaboration
- Community infrastructure

Joint Planning Agreement

Date Published: Adopted September 1987, most recently amended December 2015

Geographic Area: The Joint Planning Area (area within the rural buffer and transition areas, outside the ETJ of Chapel Hill and Carrboro, designated on the Joint Planning Area Land Use Map)

Prepared By: Orange County, Chapel Hill, Carrboro

Purpose: Provide procedures and clear jurisdiction over land use decisions in the joint planning area.

Key Objectives:

Place limitations on the ability of the Towns of Chapel Hill and Carrboro to annex within the Rural Buffer areas and within each other's Transition Areas.

Planning Topics:

- Growth management, annexation, and ETJ
- Future land use and community character

Joint Planning Land Use Plan

Date Published: Adopted October 1986, most recently amended December 2015

Geographic Area: The Joint Planning Area (area within the Rural Buffer and Transition areas, outside the ETJ of Chapel Hill and Carrboro, designated on the Joint Planning Area Land Use Map)

Prepared By: Orange County, Chapel Hill, Carrboro

Purpose: Establish future land use for the joint planning area.

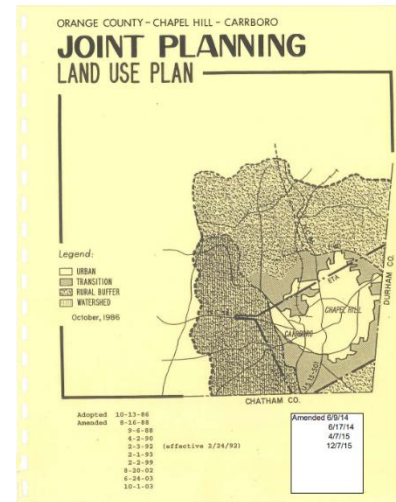
Key Objectives:

Designate Rural Buffer areas, transition areas, and general land uses for Chapel Hill, Carrboro, and Orange County.

The four major elements of the Land Use Plan development phase are natural environment, infrastructure and public services, joint planning operating principles, and sociological characteristics.

Planning Topics:

- Growth management, annexation, and ETJ
- Future land use and community character
- Preservation of natural resources
- Community infrastructure



TRANSPORTATION

The County is currently undertaking development of a Comprehensive Transportation Plan (CTP) that will assess all transportation plans that affect Orange County. The information and recommendations included in the forthcoming CTP will be considered and used in the Comprehensive Land Use Plan 2050 planning process.

Document	Date	Geographic Area
Orange County Transit Plan Update	2022	Orange County
Efland-Buckhorn-Mebane Access Management Plan	2019	Area along I-85/I-40 between Efland and Mebane
Orange Grove Road Access Management Plan	2003	Orange Grove Road corridor

Orange County Transit Plan Update

Date Published: 2022

Geographic Area: Orange County

Prepared By: Orange County

Purpose: Allocate Orange County’s Transit Tax District revenues over the next 20 years based on the community’s needs, values, and priorities.

Key Objectives:

Project selection was guided by five values: equity, environmental sustainability, economic prosperity, affordable & attainable quality of life, and transportation & access for all.

The plan recommended several capital projects: Crossing and shelter improvements at US 15-501 at Ephesus Church Road, Fordham/Manning queue jump and shoulder running improvements, and additional funding for the North-South BRT.

The plan also recommended service improvements for the CW, HS, and NS bus routes and mobility on-demand service expansion for Orange County Public Transportation.

The Plan ensures that public transportation investments support those most reliant on transit service, and that public transportation investments support resilient, sustainable, and attainable land use and development.



Planning Topics:

- Multimodal transportation

Efland-Buckhorn-Mebane Access Management Plan

Date Published: March 2019

Geographic Area: 4.25 square miles along I-85/I-40 between Efland and Mebane and is bounded by the following US Highway 70, West Ten Road/Bowman Road, I-85/US-70 Connector, and Ben Wilson Road.

Prepared By: Orange County Planning Department

Purpose: Serve as a long-range transportation vision for the area, illustrating roadway alignment and corridor width necessary to serve future land uses and address traffic impact as development occurs.

Key Objectives:

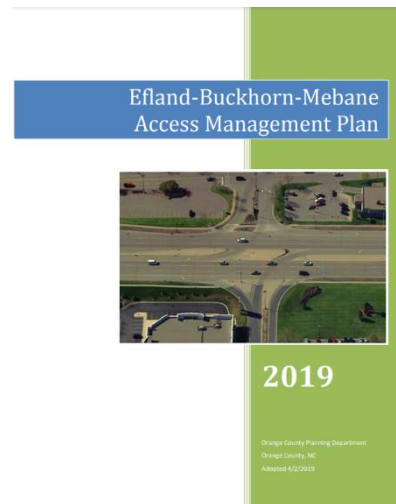
Maintain and improve the functionality of the transportation network as the Efland-Buckhorn-Mebane (E-B-M) Study Area develops.

Assist the County in promoting economic development through its development review process by encouraging developers to dedicate rights-of-way necessary for future roads.

Use the 2017 Transportation Report to renew and replace the original 2011 Efland-Buckhorn-Mebane Economic Development District Access Management Plan.

Planning Topics:

- Growth management
- Planning in multijurisdictional areas of common interest
- Multimodal transportation



Orange Grove Road Access Management Awareness Project & Report

Date Published: March 2003

Geographic Area: Orange Grove Road corridor from Churton Street to New Grady Brown School Road, includes areas bounded by I-40, I-85, and Oakdale Drive

Prepared By: Town of Hillsborough and the Board of County Commissioners, Orange County, NC

Purpose: Provide recommendations to alleviate unsafe conditions and to manage potential congestion from future development in the Orange Grove Road corridor.

Key Objectives:

Pursue funding to implement recommendations in this study. Provide pedestrian facilities along Orange Grove Road. Implement recommendations into local plans and regulations. Pursue future studies as recommended in the plan, including a Feasibility Study for South Churton Street and the Oakdale Drive corridor.

Planning Topics:

- Growth management
- Planning in multijurisdictional areas of common interest
- Multimodal transportation



PARKS AND RECREATION

Document	Date	Geographic Area
Blackwood Farm Park Master Plan	2023	Blackwood Farm Park
Little River Regional Park & Natural Area Master Plan (Appendices)	2021	Little River Regional Park and Natural Area
2030 Parks and Recreation Master Plan (Appendices)	2018	Orange County
Orange County Mountains-to-Sea Trail (MST) Route (Progress Reports)	2018	Orange County
New Hope Corridor Open Space Master Plan	1991	The City of Durham, Durham County, Orange County, and The Town of Chapel Hill

Blackwood Farm Park Master Plan

Date Published: May 2023

Geographic Area: Blackwood Farm Park

Prepared By: Orange County Department of Environment, Agriculture, Parks & Recreation

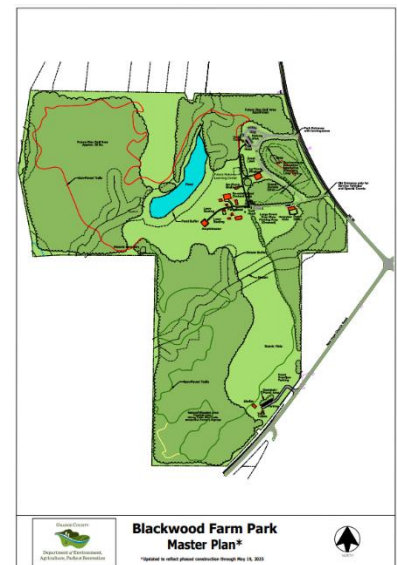
Purpose: Show planned layout of uses in Blackwood Farm Park.

Key Objectives:

Adopt a plan for future structures and uses at Blackwood Farm Park.

Planning Topics:

- Preserving natural resources
- Recreation opportunities



Little River Regional Park & Natural Area Master Plan

Date Published: October 2021

Geographic Area: Little River Regional Park and Natural Area (“Little River Park”)

Prepared By: Durham County and Orange County

Purpose: Establish a 20-year vision for the park and provide guidelines for its land management and any future developments for continued public use.

Key Objectives:

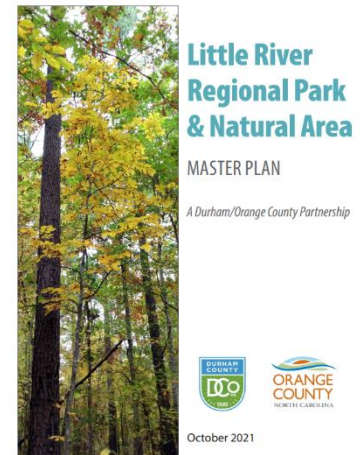
Guide future park improvements, like expanding the paved loop trail, increasing areas of pollinator habitats, adding a “natural playground”, and renovating park infrastructure.

Serve as tool for public presentations and applications for outside funding.

Goals fall into the categories of protecting and conserving nature, connecting with nature, providing recreational experiences, and collaboration and cost-effective management.

Planning Topics:

- Future land use and community character
- Planning in multijurisdictional areas of common interest
- Preserving natural resources
- Recreation opportunities



2030 Parks and Recreation Master Plan, Orange County

Date Published: November 2014

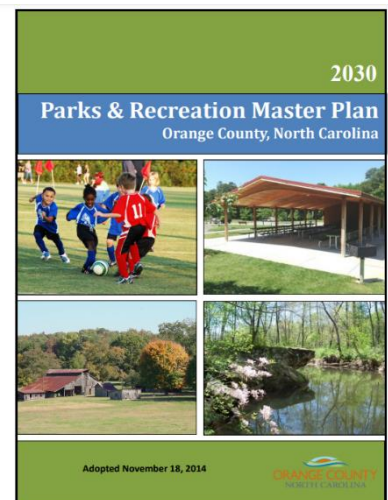
Geographic Area: Orange County

Prepared By: Orange County

Purpose: Guide the future of Parks and Recreation in Orange County.

Key Objectives:

Synthesize relevant reports, studies, surveys and needs assessments.



Project community needs and desires into a vision for the future that ensures a legacy of parks and public open spaces for current and future generations.

Make recommendations based on the findings identified in the master plan, including building the planned future parks, formalizing and building a support structure for multi-partner capital facilities, and developing a master plan for the Orange County segment of the Mountains to Sea Trail (MST).

Important Notes:

Overarching Goal: Regionally coordinated park and recreation facilities that provide healthy opportunities for recreation and exercise for all citizens of Orange County, and that preserve important cultural and natural resources.

Planning Topics:

- Preserving natural resources
- Recreation opportunities

Orange County Mountains-to-Sea Trail (MST) Route

Date Published: January 2018

Geographic Area: Orange County

Prepared By: Orange County

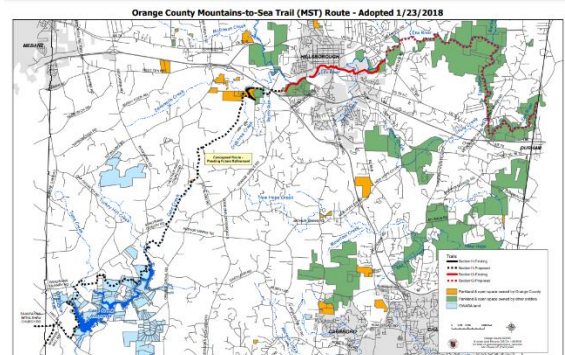
Purpose: Show existing and proposed portions of MST route in Orange County

Key Objectives:

Adopt a conceptual route for the MST in Orange County.

Planning Topics:

- Recreation opportunities



New Hope Corridor Open Space Master Plan

Date Published: April 1991

Geographic Area: Area along portions of New Hope Creek, Dry Creek, Mud Creek, and Sandy Creek in eastern Orange County and western Durham County

Prepared By: Town of Chapel Hill, City of Durham, Orange County, and Durham County

Purpose: Create an open space corridor linking Eno River State Park, New Hope Creek, Corps Lands, and Durham and Chapel Hill

Key Objectives: The plan recommends protection of these creeks and adjacent areas and proposes phases of corridor acquisition and trails and access areas construction.

Planning Topics: Future land use and community character, Preserving natural resources, Recreation opportunities